

CASE
CONSTRUCTION

CX C-SERIES HYDRAULIC EXCAVATORS

CX210C | CX210C LONG REACH | CX250C | CX250C LONG REACH

TIER
4i



CX C-SERIES HYDRAULIC EXCAVATORS

CX210C | CX250C

Clean power

Case C Series excavators use clean and efficient Tier 4 interim diesel engines.

Equipped with Cooled Exhaust Gas Recirculation (CEGR) and a diesel particulate filter, the engine is capable of meeting emissions regulations without the need for additional diesel exhaust fluids.

Automatic self-regeneration of the Diesel Particulate Diffusor (DPD) ensures no loss of productivity, while low engine rpm, improved hydraulic pump control and five new energy saving systems boost fuel economy by up to 10%.

A green economy gauge can be activated in the cab to inform the operator of the most economical operating mode setting for the machine, reporting fuel consumption in real-time.





CX C-SERIES HYDRAULIC EXCAVATORS

CX210C | CX250C

Advanced energy management

Through the use of 5 new fuel saving functions, C series excavators speed up productivity and substantially improve fuel economy. The new systems include:

Boom Economy Control (BEC)

Increased fuel efficiency during boom lower and swing operations.

Automatic Economy Control (AEC)

Improved fuel efficiency when servo joysticks are in neutral position and the operator is not calling for power from the machine.

Swing Relief Control (SWC)

Carefully manages the hydraulic power distribution at slewing operations, to provide the most efficient flow and pressure.

Spool Stroke Control (SSC)

Creates an automatic pressure adjustment during digging and leveling operations.

It saves fuel, while improving controllability for the operator in fine digging operations.

Idle functions:

All C-series excavators also feature Auto Idle and Idle Shut Down systems.

When activated, Auto Idle automatically lowers engine revs, whatever the throttle position, when the levers have been inactive for 5 seconds.

Manually, Idle can be activated by a switch on the joystick. Idle shut down, when activated, shuts down the engine when there has been no activity for 3 minutes, resulting in additional fuel savings.





Increased productivity

As part of the Case Intelligent Hydraulic System all Case C Series excavators benefit from improvements in performance and productivity.

Lifting capacity is increased and cycle times have been cut. Individual operating weights are slightly increased to cope with the additional digging and loading forces, ensuring stable, consistent high production for the customer.

Bucket and boom down regeneration systems feed hydraulic oil back to the supply side of the pump, reducing the requirement for engine power.

The C Series excavators use the familiar working mode control from the B Series machines, making it easy for the operator to become familiar with the new models. The Super Power Mode provides a 5% boost when required for maximum digging ability.

The new monitor in the C Series machines provides operators with the chance to pre-programme auxiliary hydraulic flow and pressure settings (option) for up to 10 attachments, providing rapid changeover and increased productivity.



CX C-SERIES HYDRAULIC EXCAVATORS

CX210C | CX250C



Tier 4 interim: lower consumption, top durability

The new Isuzu 4-cylinder engine meets EPA's Tier 4 interim without a need for additional diesel exhaust fluid.

The cooled exhaust gas recirculation (CEGR) in dual layer design effectively reduces NOx while PM is reduced by a diesel particulate filter (DPF) in combination with the variable geometry turbocharger. A diesel oxidation catalyst (DOC) treats carbon monoxide, hydrocarbons and other compounds.

Both components are integrated in the DPD (Diesel Particle Diffusor). Automatic self regeneration speeds your productivity - you can go on working as usual without stopping for the regeneration process of the particle diffusor. Side by side coolers, intercooler and the fuel cooler are now even more efficient thus further increasing our well appreciated durability.

A look under the hood immediately confirms an extremely efficient use of space: the engine, the cooling system and the exhaust system are all designed and grouped so as to take advantage of all the available space, while also granting excellent serviceability and operator visibility.

A ECO gauge can be activated on the new multifunction screen to inform you instantly about the key parameters concerning fuel economy and fuel consumption. Low engine rpm in combination with further improved pump torque control and further 5 new energy saving systems reduces the fuel consumption further by up to 10%.



First class serviceability

All filters and regular fill points are grouped for easy access, with engine oil change intervals set at 500 hours. A synthetic filter is used for the hydraulic oil, providing 5,000 hour intervals, and all pins and bushes (except the bucket pin) use the Case Extended Maintenance System bushings, allowing greasing intervals of up to 1,000 hours.

The radiator and cooler cores are mounted side by side, to allow easy access for cleaning and more efficient cooling. A 100 litre/min refuelling pump with automatic cut off is provided as standard, reducing downtime for regular fills.

The Japanese-built Case excavators boast an enviable reputation for reliability and durability, which looks set to continue with the new C Series of CX class crawler excavators.

CX C-SERIES HYDRAULIC EXCAVATORS

CX210C | CX250C

First class operator environment

The C Series cab is 7% larger than the previous models and uses a smaller top beam and no overlap in the front windows to offer improved all round visibility. Noise levels are reduced to almost automotive standards, around 70dB(A), while the operator has a suspension seat and fully adjustable levers as standard. Travel pedals require less effort, reducing fatigue for the operator.

The ROPS/FOPS level 1 certified cab sits on new suspension mounts. To reduce vibration for the operator and contribute to the lower internal noise levels.

The cab has a powerful air conditioning system with 25% more airflow and an 8% increase in performance.

New mirrors and a standard rear view camera, with optional side camera, improved 178 mm LED monitor inside the cab, providing the operator with a safe and secure working environment.





Full colour multifunction monitor

The standard 178 mm LED monitor provides all of the information that the operator needs at a glance. Easy to use buttons guide the operator through the screen functions and the monitor can be split to show the standard rear view, and optional side view camera images.

Information includes working mode, travel speed, working lights, attachment choice, time and working hours, along with system data such as coolant and hydraulic oil temperatures, fuel level and the condition of the particulate filter and the auto-regeneration function.

When selected, the ECO gauge displays the function of the various energy saving systems, allowing the operator to maximise efficiency and save fuel. The monitor can be set to work in one of 20 languages, and is also used by service technicians to access onboard diagnostic functions.



SiteWatch™

The Science Bit

The Case SiteWatch telematics system uses a high-tech control unit mounted on each machine to collate information from that machine and from GPS satellites. This data is then sent wirelessly through the mobile communication networks to the Case Telematics Web Portal.



SiteWatch: Centralised Fleet Control Benefits At Your Fingertips

Measure your true asset availability and optimise it

- Eliminate the “phantom fleet”: SiteWatch allows to identify spare units or under loaded machines on each site.
- Become able to reallocate units where they are more needed.
- Forward Maintenance Planning is easier since the actualised working hours are always available.
- Extend the benefits of SiteWatch to the rest of your fleet: SiteWatch can be installed on the units of other brands as well.

Challenge your Total Cost of Ownership!

- Being able to compare the fuel usage of different machine types will allow you choose the right equipment.
- Save on transport costs with planned and grouped maintenance tasks.
- Peace of mind, optimised uptime and lower repair costs: with preventive maintenance you can for example be alerted if the engine needs to be serviced and avoid a disruptive breakdown.
- Be able to compare your asset Return On Investment on different sites.
- Your equipment is used only during working hours. You can set up alerts so that you know if it is in use during the weekend or at night.
- Integrate with the programmed maintenance package, so that you can be sure every machine is at the right place at the right time.

More Safety, Lower Insurance Premium

- Keep thieves away: dissuade them from attacking your asset because it is geo-localised. SiteWatch is hidden so that thieves can't find it quickly.
- Your fleet is used only where you decide. You can define a virtual fence and receive an email when a machine exits that perimeter.



CX C-SERIES HYDRAULIC EXCAVATORS

CX210C





CX C-SERIES HYDRAULIC EXCAVATORS

CX210C

Specifications

Engine

Model _____ ISUZU AM-4HK1X
Type _____ Water-cooled, 4-cycle diesel, 4-cylinder in line,
Electronically controlled, high pressure common rail system, variable
geometry turbocharger, air cooled intercooler, dual exhaust gas
recirculation, DPD system with auto-regeneration. Tier 4 interim
certified.

Number of cylinders/displacement _____ 4/5.19 l

Bore/Stroke _____ 115 x 125 mm

Horsepower ISO 9249 _____ 119 kW/160 hp at 1800 min⁻¹

Maximum torque ISO 9249 _____ 621 Nm at 1500 min⁻¹

Hydraulic system

Max oil flow _____ 2 x 211 l/min @ 1800 min⁻¹

2 variable displacement axial piston pumps with regulating system

Working circuit pressure

Boom/Arm/Bucket _____ 34.3 MPa

Boom/Arm/Bucket (with auto power up) _____ 36.8 MPa

Swing circuit _____ 29.4 MPa

Travel _____ 34.3 Mpa

Swing

Maximum swing speed _____ 11.5 min⁻¹

Travel

Travel motor _____ Variable displacement axial piston motor

Max travel speed _____ 5.6 km/h (Automatic travel speed shifting)

Low travel speed _____ 3.4 km/h

Gradeability _____ 70% (35°)

Drawbar pull _____ 188 kN

Electrical system

Circuit _____ 24V

Alternator _____ 50 Amp

Undercarriage

Number of carriers rollers (each side) _____ 2

Number of track rollers (each side) _____ 8

Number of shoes (each side) _____ 49

Type of shoe _____ Triple grouser shoe

Capacities

Fuel tank _____ 320 l

Hydraulic system _____ 220 l

Cooling system _____ 30.8 l

Weight and ground pressure

With 2.40 m Arm , 1.0 m³ bucket, operator, lubricant, coolant, full fuel tank and top guard OPG level 2

CX210C	Weight (kg)	Ground pressure (MPa)
500 mm grouser shoe	20.760	0.048
600 mm grouser shoe	21.200	0.044
700 mm grouser shoe	21.640	0.039
800 mm grouser shoe	21.940	0.035

With 2.40 m Arm , 1.0 m³ bucket, operator, lubricant, coolant, full fuel tank and top guard OPG level 2

CX210C NLC Mono	Weight (kg)	Ground pressure (MPa)
500 mm grouser shoe	21.500	0.053
600 mm grouser shoe	21.940	0.048

With 2.40 m Arm , 1.0 m³ bucket, operator, lubricant, coolant, full fuel tank and top guard OPG level 2

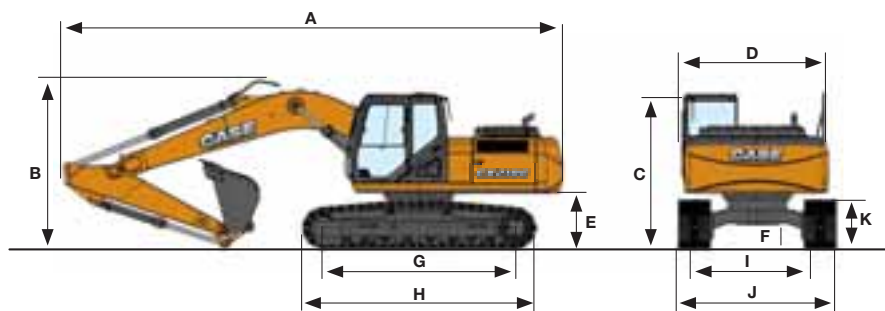
CX210C NLC 2P boom	Weight (kg)	Ground pressure (MPa)
500 mm grouser shoe	23.400	0.058
600 mm grouser shoe	23.840	0.052

With 6.40 m Arm , 0.37 m³ Bucket, operator, lubricant, coolant, full fuel tank and top guard OPG level 2

CX210C long reach	Weight (kg)	Ground pressure (MPa)
800 mm grouser shoe	23.300	0.036

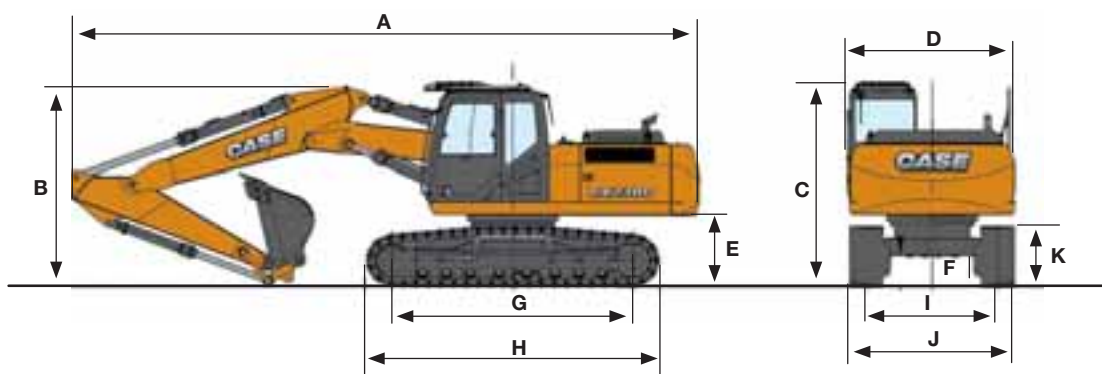
General dimensions

Monoboam



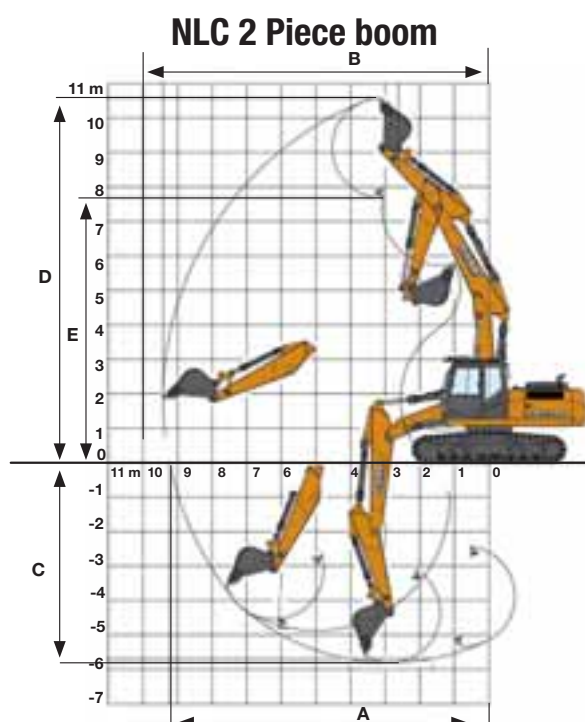
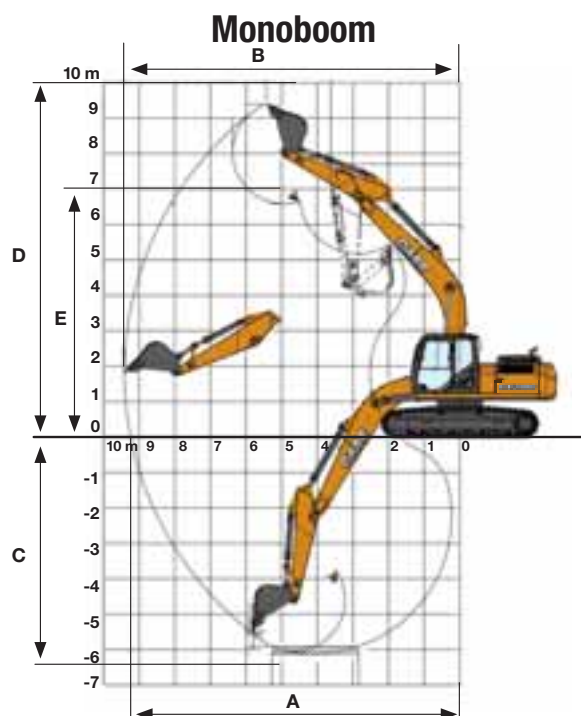
	Arm 2.40 m	Arm HD 1.90 m	Arm 2.94 m
Overall length (without attachment)	4960 mm	4960 mm	4960 mm
A Overall length (with attachment)	9460 mm	9490 mm	9380 mm
B Overall height (with attachment)	3200 mm	3110 mm	3000 mm
C Cab height	3070 mm	3070 mm	3070 mm
D Upper structure overall width	2770 mm	2770 mm	2770 mm
Swing (rear end) radius	2750 mm	2750 mm	2750 mm
E Clearance height under upper structure	1040 mm	1040 mm	1040 mm
F Minimum ground clearance	440 mm	440 mm	440 mm
G Wheel base (Center to center of wheels)	3660 mm	3660 mm	3660 mm
H Crawler overall length	4470 mm	4470 mm	4470 mm
I Track gauge	2390 mm	2390 mm	2390 mm
J Undercarriage overall width (with 500 mm shoes)	2990 mm	2990 mm	2990 mm
I Track gauge NLC	1990 mm	1990 mm	1990 mm
J Undercarriage NLC overall width (with 500 mm shoes)	2490 mm	2490 mm	2490 mm
K Crawler tracks height	920 mm	920 mm	920 mm

NLC 2 Piece boom



	Arm 1,90 m	Arm 2,40 m	Arm 2,94 m
Overall length (without attachment)	5060 mm	5060 mm	5060 mm
A Overall length (with attachment)	9570 mm	9540 mm	9480 mm
B Overall height (with attachment)	3100 mm	3100 mm	3100 mm
C Cab height	3100 mm	3100 mm	3100 mm
D Upper structure overall width	2540 mm	2540 mm	2540 mm
Swing (rear end) radius	2830 mm	2830 mm	2830 mm
E Clearance height under upper structure	1060 mm	1060 mm	1060 mm
F Minimum ground clearance	430 mm	430 mm	430 mm
G Wheel base (Center to center of wheels)	3660 mm	3660 mm	3600 mm
H Crawler overall length	4470 mm	4470 mm	4470 mm
I Track gauge NLC	1990 mm	1990 mm	1990 mm
J Undercarriage NLC overall width (with 500 mm shoes)	2490 mm	2490 mm	2490 mm
K Crawler tracks height	920 mm	920 mm	920 mm

Performance data



Monoboarm

	Arm 2.40 m	Arm HD 1.90 m	Arm 2.94 m
Boom length	5700 mm	5700 mm	5700 mm
Bucket radius	1450 mm	1450 mm	1450 mm
Bucket wrist action	177°	177°	177°
A Maximum reach at GRP	9240 mm	8770 mm	9730 mm
B Maximum reach	9420 mm	8960 mm	9900 mm
C Max. digging depth	6110 mm	5610 mm	6650 mm
D Max. digging height	9390 mm	9140 mm	9610 mm
E Max. dumping height	6590 mm	6330 mm	6810 mm

NLC 2 Piece boom

	Arm 1,90 m	Arm 2,40 m	Arm 2,94 m
Boom length	5670 mm	5670 mm	5670 mm
Bucket radius	1450 mm	1450 mm	1450 mm
Bucket wrist action	177°	177°	177°
A Maximum reach at GRP	8750 mm	9220 mm	9720 mm
B Maximum reach	8950 mm	9420 mm	9900 mm
C Max. digging depth	5310 mm	5800 mm	6320 mm
D Max. digging height	10210 mm	10580 mm	10940 mm
E Max. dumping height	7320 mm	7680mm	8040 mm

Digging force

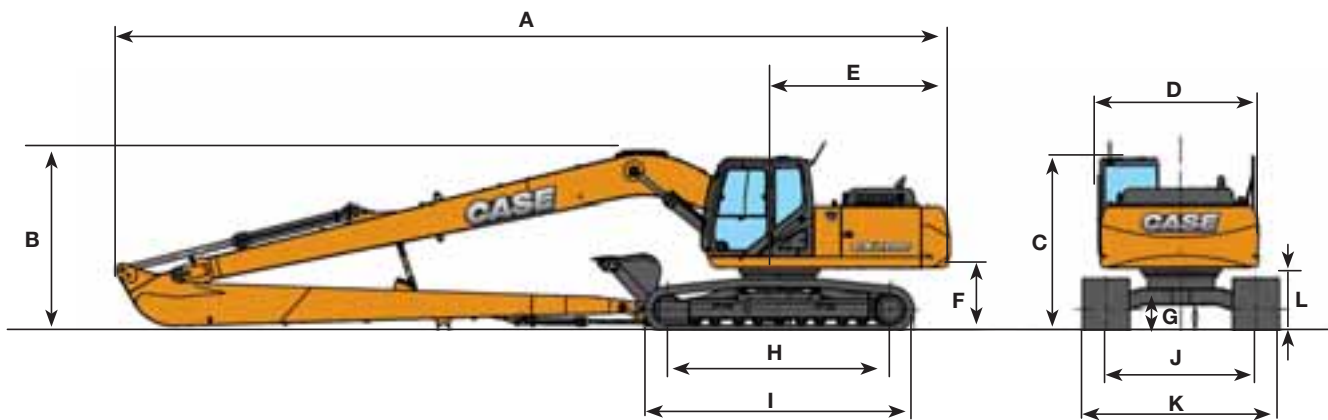
With 1.0 m³ bucket (ISO 6015)

	Arm 2.40 m	Arm HD 1.90 m	Arm 2.94 m
Arm digging force	123 kN	142 kN	103 kN
- with auto power boost	132 kN	152 kN	110 kN
Bucket digging force	142 kN	142 kN	142 kN
- with auto power boost	152 kN	152 kN	152 kN

CX C-SERIES HYDRAULIC EXCAVATORS

CX210C LONG REACH

General dimensions



Arm 6.40 m

	Overall length (without attachment)	4960 mm
A	Overall length (with attachment)	12470 mm
B	Overall height (with attachment)	3070 mm
C	Cab height	3070 mm
D	Upper structure overall width	2770 mm
E	Swing (rear end radius)	2750 mm
F	Clearance height under upper structure	1040 mm
G	Minimum ground clearance	440 mm
H	Wheel base (Center to center of wheels)	3660 mm
I	Crawler overall length	4470 mm
J	Track gauge	2390 mm
K	Undercarriage overall width (with 800 mm shoes)	3190 mm
L	Crawler tracks height	920 mm

CX C-SERIES HYDRAULIC EXCAVATORS

CX250C





CX C-SERIES HYDRAULIC EXCAVATORS

CX250C

Specifications

Engine

Model _____ ISUZU AL-4HK1X
Type _____ Water-cooled, 4-cycle diesel, 4-cylinder in line, Electronically controlled, high pressure common rail system, variable geometry turbocharger, air cooled intercooler, dual exhaust gas recirculation, DPD system with auto-regeneration. Tier 4 interim certified.
Number of cylinders/displacement _____ 4/5.19 l
Bore/Stroke _____ 115 x 125 mm
Horsepower 80/1269/EEC _____ 132 kw @ 2000 min⁻¹
Maximum torque 80/1269/EEC _____ 621 Nm @ 1800 min⁻¹

Hydraulic system

Max oil flow _____ 2 x 234 l/min @ 2000 min⁻¹
2 variable displacement axial piston pumps with regulating system
Boom/Arm/Bucket _____ 36.8 MPa
Swing circuit _____ 27/28.9 MPa
Travel _____ 34.3 MPa

Swing

Maximum swing speed _____ 10.6 rpm

Travel

Travel motor _____ Variable displacement axial piston motor
Max travel speed _____ 5.5 km/h (Automatic travel speed shifting)
Low travel speed _____ 3.5 km/h
Gradeability _____ 70% (35°)
Drawbar pull _____ 201 kN

Electrical system

Circuit _____ 24V
Alternator _____ 50 Amp

Undercarriage

Number of carriers rollers (each side) _____ 2
Number of track rollers (each side) _____ 9
Number of shoes (each side) _____ 51
Type of shoe _____ Triple grouser shoe

Circuit and component capacities

Fuel tank _____ 410 l
Hydraulic system _____ 250 l
Cooling system _____ 30.2 l

Weight and ground pressure

With 3.00 m Arm, 1.1 m³ bucket, operator, lubricant, coolant, full fuel tank and top guard OPG level 2

CX250C LC	Weight (kg)	Ground pressure (MPa)
600 mm grouser shoe	24.800	0.049
700 mm grouser shoe	25.100	0.043
800 mm grouser shoe	25.400	0.038
900 mm grouser shoe	25.700	0.034

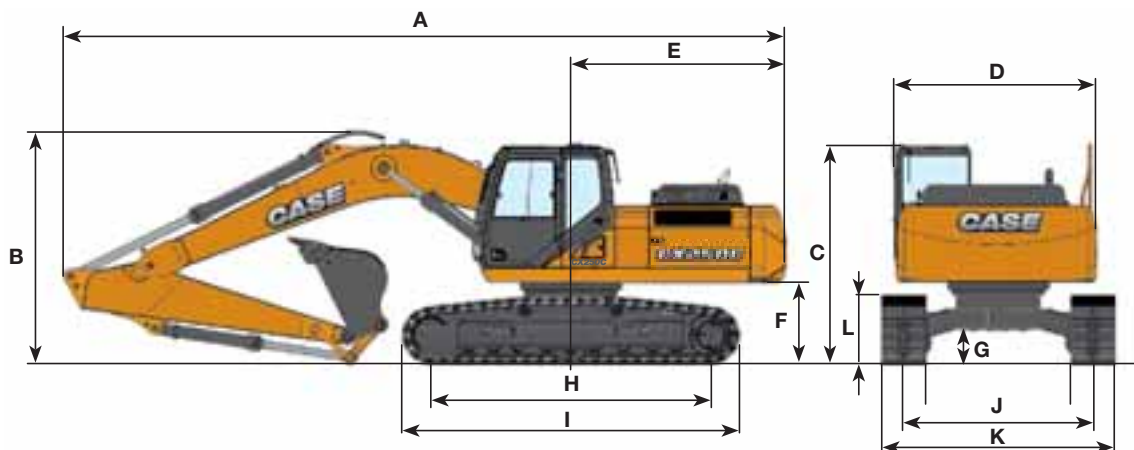
CX250C NLC	Weight (kg)	Ground pressure (MPa)
600 mm grouser shoe	24.700	0.049
700 mm grouser shoe	25.000	0.042

With 8.00 m arm, 0.37m³ bucket, operator, lubricant, coolant, full fuel tank and top guard OPG level 2

CX250C LC long reach	Weight (kg)	Ground pressure (MPa)
800 mm grouser shoe	28.100	0.042

General dimensions

With 5.85 m standard boom



LC / NLC

	Arm 3.00 m	Arm HD 2.50 m	Arm 3.52 m
Overall length (without attachment)	5270 mm	5270 mm	5270 mm
A Overall length (with attachment)	9880 mm	9950 mm	9910 mm
B Overall height (with attachment)	3200 mm	3350 mm	3360 mm
C Cab height	3130 mm	3130 mm	3130 mm
D Upper structure overall width	2770 mm	2770 mm	2770 mm
E Swing (rear end radius)	2950 mm	2950 mm	2950 mm
F Clearance height under upper structure	1100 mm	1100 mm	1100 mm
G Minimum ground clearance	460 mm	460 mm	460 mm
H Wheel base (Center to center of wheels)	3840 mm	3840 mm	3840 mm
I Crawler overall length	4650 mm	4650 mm	4650 mm
L Crawler tracks height	940 mm	940 mm	940 mm

LC

	Arm 3.00 m	Arm HD 2.50 m	Arm 3.52 m
J Track gauge	2590 mm	2590 mm	2590 mm
K Undercarriage overall width (with 600 mm shoes)	3190 mm	3190 mm	3190 mm

NLC

	Arm 3.00 m	Arm HD 2.50 m	Arm 3.52 m
J Track gauge	2390 mm	2390 mm	2390 mm
K Undercarriage overall width (with 600 mm shoes)	2990 mm	2990 mm	2990 mm

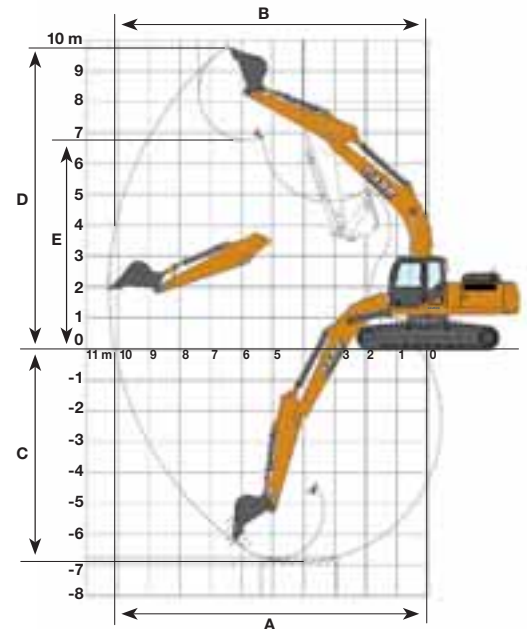
CX C-SERIES HYDRAULIC EXCAVATORS

CX250C

Performance data

With 5.85 m standard boom

LC / NLC	Arm 3.00 m	Arm HD 2.50 m	Arm 3.52 m
Boom length	5850 mm	5850 mm	5850 mm
Bucket radius	1570 mm	1570 mm	1570 mm
Bucket wrist action	175°	175°	175°
A Maximum reach at GRP	10100 mm	9630 mm	10620 mm
B Maximum reach	10280 mm	9820 mm	10790 mm
C Max. digging depth	6900 mm	6400 mm	7420 mm
D Max. digging height	9760 mm	9560 mm	10070 mm
E Max. dumping height	6760 mm	6550 mm	7060 mm
Arm digging force	120 kN	141 kN	107 kN
- with auto power up	129 kN	151 kN	115 kN
Bucket digging force	162 kN	162 kN	162 kN
- with auto power up	174 kN	174 kN	174 kN



Lifting capacity

Front	REACH						
	1.5 m	3.0 m	4.5 m	6.0 m	7.5 m	9.0 m	At max reach

LC - Standard arm. 2.5 m HD arm length, 1.30 m³ bucket, 600G shoes, max reach 9.46 m

7.5 m								4130*	4130*			3430*	3430*	7.64
6.0 m								5330*	4500			3260*	3260*	8.61
4.5 m				6270*	6270*	6650*	6350	6020*	4360			3240*	2970	9.18
3.0 m			12580*	12580*	10120*	9610	7850*	6060	6350	4180		3320*	2750	9.44
1.5 m					12110*	8920	8850	5720	6180	4010		3500*	2700	9.42
0 m			8500*	8500*	13430*	8510	8640	5470	6030	3870		3820*	2800	9.16
-1.5 m	9640*	9640*	12090*	12090*	13360*	8460	8530	5380	5980	3830		4400*	3090	8.63
-3.0 m	12110*	12110*	17470*	16990	12730*	8580	8600	5460	6100	3950		5440*	3670	7.79
-4.5 m	17470*	17470*	15510*	15510*	10920*	8860	7760*	5740				6440*	4910	6.53

NLC - Standard arm. 2.5 m HD arm length, 1.30 m³ bucket, 600G shoes, max reach 9.46 m

7.5 m									4130*	4130*			3430*	3430*	7.64
6.0 m									5330*	4120			3260*	3120	8.61
4.5 m					6270*	6270*	6650*	5860	6020*	3990	4350*	2810	3240*	2690	9.18
3.0 m			12590*	12590*	10120*	8750	7850*	5530	6340	3810	4650	2730	3320*	2480*	9.44
1.5 m					12110*	8050	8830	5200	6160	3630	4560	2650	3500*	2430	9.42
0 m			8500*	8500*	13430*	7650	8620	4950	6010	3500	4500	2600	3820*	2520	9.16
-1.5 m	9640*	9640*	12090*	12090*	13360*	7600	8510	4860	5960	3460			4400*	2780	8.63
-3.0 m	12210*	12210*	17470*	15620	12730*	7720	8580	4940	6090	3580			5440*	3320	6.53
-4.5 m	17470*	17470*	15510*	15440	10920*	8010	7760*	5250					6440*	4450	7.18

Front 360°	REACH							m
	1.5 m	3.0 m	4.5 m	6.0 m	7.5 m	9.0 m	At max reach	

LC - Standard arm. 3.0 m arm length, 1.11 m³ bucket, 600G shoes, max reach 9.92 m

7.5 m								4150 *	4150 *	2370 *	2370 *			8.23	
6.0 m								4800 *	4630	2830 *	2830 *	2250 *	2250 *	9.12	
4.5 m						6180 *	6180 *	5640 *	4480	4470 *	3200	2230 *	2230 *	9.66	
3.0 m			13430 *	13430 *	9720 *	9670	7450 *	6220	6280 *	4290	4750	3100	2290 *	2290	9.9
1.5 m			9390 *	9390 *	12020 *	9170	8650 *	5850	6270	4090	4640	3000	2430 *	2430 *	9.89
0 m			9250 *	9250 *	13280 *	8650	8750	5570	6100	3930	4550	2920	2660 *	2610	9.64
-1.5 m	8880 *	8880 *	11800 *	11800 *	13470 *	8490	8580	5420	6000	3850	4146 *	2910	3060 *	2840	9.13
-3.0 m	10960 *	10960 *	15870 *	15870 *	13100 *	8560	8590	5450	6060	3910			3760 *	3300	8.34
-4.5 m	15110 *	15110 *	17030 *	17030 *	11760 *	8780	8560 *	5660					5190 *	4240	7.18
-6.0 m			12270 *	12270 *	8430 *	8430 *							6020 *	6020 *	5.44

NLC - Standard arm. 3.0 m arm length, 1.11 m³ bucket, 600G shoes, max reach 9.92 m

7.5 m								4150 *	4150 *			2370 *	2370 *	8.23	
6.0 m								4800 *	4240	2830 *	2830 *	2250 *	2250 *	9.12	
4.5 m						6180 *	5950 *	5640 *	4100	4470 *	2910	2230 *	2230 *	9.66	
3.0 m			13430 *	13430 *	9720 *	8950	7450 *	5680	6280 *	3910	4730	2810	2290 *	2290 *	9.9
1.5 m			9390 *	9390 *	12020 *	8290	8650 *	5320	6260	3720	4620	2710	2430 *	2270	9.89
0 m			9250 *	9250 *	13280 *	7790	8720	5040	6080	3560	4540	2630	2660 *	2340	9.64
-1.5 m	8880 *	8880 *	11800 *	11800 *	13470 *	7640	8550	4900	5990	3480	1460 *	2630	3060 *	2560	9.13
-3.0 m	10960 *	10960 *	15870 *	14870	13100 *	7700	8570	4930	6040	3540			3760 *	2980	8.34
-4.5 m	15110 *	15110 *	17030 *	15690	11760 *	7920	8560 *	5140					5190 *	3840	7.18
-6.0 m			12270 *	12270 *	8430 *	8070							6020 *	6020 *	5.44

LC - Standard arm. 3.5 m arm length, 1.00 m³ bucket, 600G shoes, max reach 10.4 m

9.0 m								2240 *	2240 *			2120 *	2120 *	7.57	
7.5 m								3300 *	3300 *			1890 *	1890 *	8.85	
6.0 m								4330 *	4330 *	3490 *	3310	1790 *	1790 *	9.68	
4.5 m								5160 *	4540	4290	3230	1770 *	1770 *	10.18	
3.0 m					8770 *	8770 *	6910 *	6300	5870 *	4330	4770	3120	1820 *	1820 *	10.41
1.5 m			13400 *	13400 *	11220 *	9340	8200 *	5920	6300	4110	4640	3000	1920 *	1920 *	10.40
0 m	4270 *	4270 *	9690 *	9690 *	12850 *	8710	8770	5580	6100	3920	4530	2900	2100 *	2100 *	10.16
-1.5 m	7650 *	7650 *	11290 *	11290	13400 *	8340	8540	5380	5960	3800	4470	2840	2400 *	2400 *	9.68
-3.0 m	9810 *	9810 *	14490 *	14490 *	13220 *	8440	8510	5360	5970	3810			2900 *	2900 *	8.94
-4.5 m	14320 *	14320 *	18150 *	17430	12290 *	8610	8580	5500	6060	3960			3860 *	3610	7.86
-6.0 m			14320 *	14320 *	9860	8820	6680	5690					5850 *	5220	6.30

NLC - Standard arm. 3.5 m arm length, 1.00 m³ bucket, 600G shoes, max reach 10.4 m

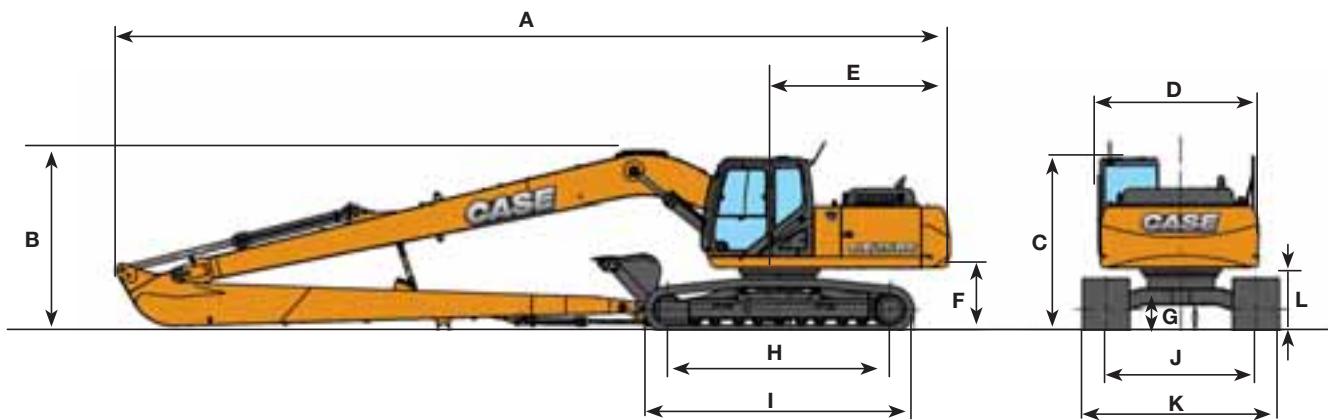
9.0 m								2240 *	2240 *			2120 *	2120 *	7.57	
7.5 m								3300 *	3300 *			1890 *	1890 *	8.85	
6.0 m								4330 *	4250 *	3490 *	3020	1790 *	1790 *	9.68	
4.5 m								5160 *	4160	4290	2950	1770 *	1770 *	10.18	
3.0 m					8770 *	8770 *	6910 *	5780	5870 *	3960	4760	2840	1820 *	1820 *	10.41
1.5 m			13400 *	13400 *	11220 *	8460	8200 *	5390	6290	3740	4630	2720	1920 *	1920 *	10.40
0 m	4270 *	4270 *	9690 *	9690 *	12850 *	7860	8760	5070	6090	3560	4520	2610	2100 *	2100 *	10.16
-1.5 m	7650 *	7650 *	11290 *	11290	13400 *	7580	8530	4860	5960	3440	4460	2560	2400 *	2280	9.68
-3.0 m	9810 *	9810 *	14490 *	14490 *	13220 *	7600	8490	4850	5960	3450			2900 *	2610	8.94
-4.5 m	14320 *	14320 *	18150 *	15540	12290 *	7770	8570	4990	6050	3600			3860 *	3270	7.86
-6.0 m			14320 *	14320 *	9860	8070	6680	5220					5850 *	4740	6.30

* Hydraulic capacity 87%

CX C-SERIES HYDRAULIC EXCAVATORS

CX250C LONG REACH

General dimensions



Arm 8.00 m

	Overall length (without attachment)	5270 mm
A	Overall length (with attachment)	14380 mm
B	Overall height (with attachment)	3130 mm
C	Cab height	3130 mm
D	Upper structure overall width	2770 mm
E	Swing (rear end radius)	2950 mm
F	Clearance height under upper structure	1100 mm
G	Minimum ground clearance	460 mm
H	Wheel base (Center to center of wheels)	3840 mm
I	Crawler overall length	4650 mm
J	Track gauge	2590 mm
K	Undercarriage overall width (with 800 mm shoes)	3390 mm
L	Crawler tracks height	940 mm

Standard Equipment CX210C

ENGINE

Isuzu 4-cylinder turbodiesel in line
Certified Tier 4 interim (CEGR)
Electronic fuel injection
High pressure common rail system
Variable geometry turbo charger
Cooled Exhaust Gas Recirculation (CEGR)
Diesel Particulate Diffuser (DPD)
(Diesel Oxidation Catalyst DOC + Diesel Particulate Filter DPF)
Neutral safety start
Auto-engine warm up, emergency stop
Glow-plug pre-heat
Idle System:
Auto-idle
One-touch idle
Idle shut-down
EPF (Engine Protection Feature)

Dual-stage fuel filtration
Dual element air filter
Remote oil filter
Green plug oil drain
500-hour engine oil change interval
Refuelling Pump

HYDRAULICS

Auto power boost
Auto swing priority
Auto travel speed change
Selectable work modes
Overload warning device
SWC - SWING RELIEF CONTROL
SSC - SPOOL STROKE CONTROL
BEC - BOOM ECONOMY CONTROL
AEC - AUTO ECONOMY CONTROL
SEC - SWING ECONOMY CONTROL
ISO pattern controls
Pre-set auxiliary pump settings

Switch controlled auxiliary selection
10 x auxiliary flow settings in memory
Auxiliary valve
Auxiliary pipe brackets
5,000 hour hydraulic oil change interval
1,000 hour hydraulic filter change interval
Hydraulic track adjustment
SAHR brake

UPPERSTRUCTURE

4-point isolation mounted cab (fluid and spring)
Common key vandal locks
Swivel guard belly pan
Rear view safety camera
ATTACHMENTS
Standard boom 5.70 m

Arm HD 2.40 m
EMS bushings
Bucket linkage with hook
Boom mounted work light (70 watt)
Auxiliary pipe brackets
Centralized lube bank
Attachment cushion valve
Arm and boom regeneration
Safety valves on boom and arm cylinders with overload warning device
OPERATOR STATION
Interior dome light (10W)
ROPS/FOPS level 1 cab
FOPS guard OPG level II on cab roof
Pressurized cab
Tempered safety glass
One-touch lock front window
Sun visor & rain deflector

AC/heat/defrost w/ auto climate control
Hot & coolbox, cup holder & ashtray
Interior dome light
Cloth covered air-suspension seat
Seat-belt
Adjustable armrests
Tilting consoles - 4-position
Low-effort controls (short)
Sliding cockpit (180 mm)
Controls pre-wired for auxiliary
Auxiliary select system
Straight travel
Aux-in port for personal electronics
Multifunction color monitor
Rear-view camera
Anti-theft system (start code system)
Rubber floor mat

12-volt electric socket
24-volt cigarette lighter
One-piece right hand window
2 internal & 3 external view mirrors
2 working lights (boom & upperstructure)
Beacon harness
2 cab top working lights
Windshield wiper / washer
Clear (Lexan) roof window w/ sunshade
Storage compartments
On-board diagnostic system
UNDERCARRIAGE
600 mm steel shoes, triple semigrouser
Strutted and sealed link
Full overlap turntable bearing tub
Single track guide

Optional Equipment CX210C / CX210C LONG REACH

HYDRAULICS

Auxiliary Hydraulics -
Single acting breaker circuit
Multifunction circuit w pressure control
Low-flow circuit

ATTACHMENTS

Long Reach boom and arm
Arm - 1.90 m HD / 2.94 m
Hydr. or mech quickcoupler
Buckets: Extreme / Heavy duty / GP / ditching

Hammers, shears, grapples

OPERATOR STATION

Front cab guard - vertical bars (OPG level 2)
Front cab guard - vertical bars

(OPG level 1)
Front mesh screen
AM/FM radio w/ antenna and 2-speakers
Side-view camera
UPPERSTRUCTURE

Auto centralized greasing system
Rubber bumper guard (order through Service Parts)
UNDERCARRIAGE
Steel shoes, triple semi-grouser

700 mm, 800mm
900 mm steeltracks for swamp only, 600mm rubber link chains
Triple track guide
High ambient heat package - 45-50°C (Tropical Package)

Standard Equipment CX250C

ENGINE

Isuzu 4-cylinder turbodiesel in line
Certified Tier 4 interim (CEGR)
Electronic fuel injection
High pressure common rail system
Variable geometry turbo charger
Cooled Exhaust Gas Recirculation (CEGR)
Diesel Particulate Diffuser (DPD)
(Diesel Oxidation Catalyst DOC + Diesel Particulate Filter DPF)
Neutral safety start
Auto-engine warm up, emergency stop
Glow-plug pre-heat
Idle System:
Auto-idle
One-touch idle
Idle shut-down
EPF (Engine Protection Feature)

Dual-stage fuel filtration
Dual element air filter
Remote oil filter
Green plug oil drain
500-hour engine oil change interval
Refuelling Pump

HYDRAULICS

Auto power boost
Auto swing priority
Auto travel speed change
Selectable work modes
Overload warning device
SWC - SWING RELIEF CONTROL
SSC - SPOOL STROKE CONTROL
BEC - BOOM ECONOMY CONTROL
AEC - AUTO ECONOMY CONTROL
SEC - SWING ECONOMY CONTROL
ISO pattern controls
Pre-set auxiliary pump settings

Switch controlled auxiliary selection
10 x auxiliary flow settings in memory
Auxiliary valve
Auxiliary pipe brackets
5,000 hour hydraulic oil change interval
1,000 hour hydraulic filter change interval
Hydraulic track adjustment
SAHR brake

UPPERSTRUCTURE

4-point isolation mounted cab (fluid and spring)
Common key vandal locks
Swivel guard belly pan
Rear view safety camera
ATTACHMENTS
Standard boom 5.85 m
Arm 3.00 m

EMS bushings
Bucket linkage with hook
Boom mounted work light (70 watt)
Auxiliary pipe brackets
Centralized lube bank
Attachment cushion valve
Arm and boom regeneration
Safety valves on boom and arm cylinders with overload warning device
OPERATOR STATION
Interior dome light (10W)
ROPS/FOPS level 1 cab
FOPS guard OPG level II on cab roof
Pressurized cab
Tempered safety glass
One-touch lock front window
Sun visor & rain deflector
AC/heat/defrost w/ auto climate control

Hot & coolbox, cup holder & ashtray
Interior dome light
Cloth covered air-suspension seat
Seat-belt
Adjustable armrests
Tilting consoles - 4-position
Low-effort controls (short)
Sliding cockpit (180 mm)
Controls pre-wired for auxiliary
Auxiliary select system
Straight travel
Aux-in port for personal electronics
Multifunction color monitor
Rear-view camera
Anti-theft system (start code system)
Rubber floor mat
12-volt electric socket
24-volt cigarette lighter
One-piece right hand window

2 internal & 3 external view mirrors
2 working lights (boom & upperstructure)
Beacon harness
2 cab top working lights
Windshield wiper / washer
Clear (Lexan) roof window w/ sunshade
Storage compartments
On-board diagnostic system
UNDERCARRIAGE
600 mm steel shoes, triple semigrouser
Strutted and sealed link
Full overlap turntable bearing tub
Single track guide

Optional Equipment CX250C / CX250C LONG REACH

HYDRAULICS

Auxiliary Hydraulics -
Single acting breaker circuit
Multifunction circuit w pressure control
Low-flow circuit

ATTACHMENTS

Long Reach boom and arm
Boom 5.85 m HD
Arm - 2.50 m / 3.52 m
Arm Heavy Duty - 2.50 m / 3.00 m

Hydr. or mech quickcoupler
Buckets: Extreme / Heavy duty / GP / ditching
Hammers, shears, grapples
OPERATOR STATION
Front cab guard - vertical bars

(OPG level 2)
Front cab guard - vertical bars (OPG level 1)
Front mesh screen
AM/FM radio w/ antenna and 2-speakers

Side-view camera
UPPERSTRUCTURE
Auto centralized greasing system
Rubber bumper guard (order through Service Parts)

UNDERCARRIAGE
Steel shoes, triple semi-grouser
700 mm
Steel shoes, triple semi-grouser
800 mm, 900 mm (LC only)
Triple track guide

Standard and optional equipment shown can vary by country.

Hanlon Case
Highlands
Campton
Bedford
SG17 5NZ

01462 813301
info@hanlon-case.co.uk
www.hanlon-case.co.uk



CASE Customer Assistance
00800-2273-7373

The call is free from a land line. Check in advance with your Mobile Operator if you will be charged.

NOTE: Standard and optional fittings can vary according to the demands and specific regulations of each country. The illustrations may include optional rather than standard fittings - consult your Case dealer. Furthermore, CNH reserves the right to modify machine specifications without incurring any obligation relating to such changes.

Conforms to directive 98/37/CE **CE**



www.casece.com